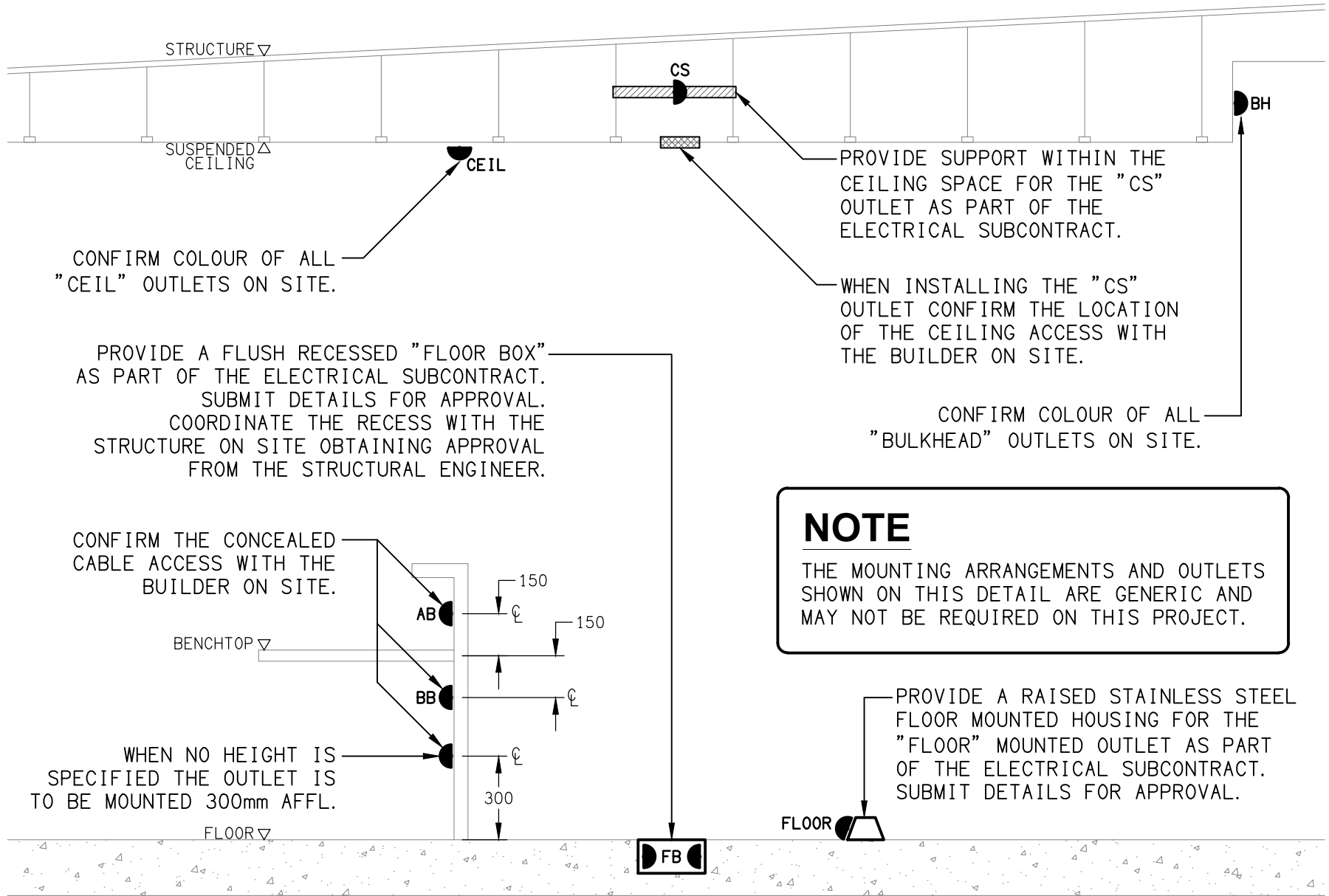


LEGEND

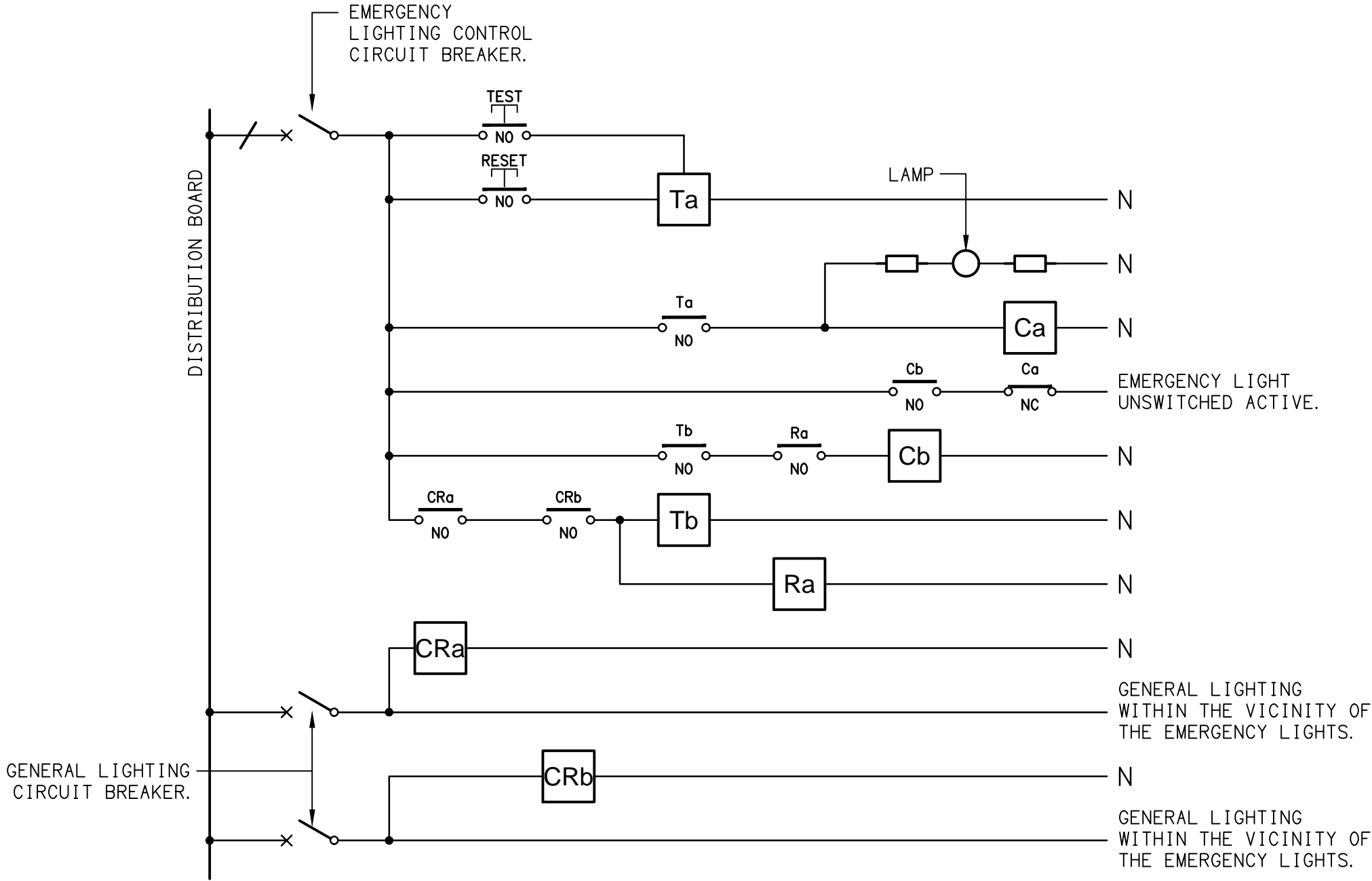
- ELECTRICAL SERVICES SWITCHBOARD.
- SWITCHBOARD / CONTROL PANEL NOT PROVIDED AS PART OF THE ELECTRICAL SUBCONTRACT.
- SINGLE POWER OUTLET.
- DOUBLE POWER OUTLET.
- SINGLE PHASE ISOLATOR.
- THREE PHASE ISOLATOR.
- LIGHTING CONTROL SWITCHPANEL, TYPE x.
- CIRCUIT LINE.
- SWITCH LINE.
- POWER CIRCUIT DESIGNATION. DENOTES DB AND CIRCUIT.
- LIGHTING CONTROL CHANNEL REFERENCE.
- DALI POT.
- ELECTRICAL EQUIPMENT AS NOTED.
- REFER TO DETAIL NOTED FOR THE AREA SHOWN HATCHED. ADDITIONAL OUTLETS & FITTINGS MAY BE SHOWN ON DETAIL.
- Sx: LED JOINERY / CEILING STRIP LIGHT, TYPE AS NOTED.
- E1: GENERAL RECESSED LED EMERGENCY LIGHT, WHITE.
- E2: GAMING ROOM RECESSED LED EMERGENCY LIGHT, BLACK.
- EX: EMERGENCY LED EXIT LIGHT, WHITE UNLESS NOTED AS BLACK (BK).
- L1: 1200 LONG EMERGENCY BATTEN C/W SENSOR.
- PDE: EXISTING DECORATIVE PENDANT TO BE RETAINED.
- WL04: DUAL UP / DOWN WALL LIGHT.
- RD01: RECESSED DOWNLIGHT, BLACK.
- RD02: RECESSED DOWNLIGHT, WHITE.
- RD03: RECESSED ADJUSTABLE DOWNLIGHT, WHITE.
- RD04: RECESSED NARROW BEAM DOWNLIGHT, WHITE.
- SL02: REPLACE THE EXISTING BATTEN LIGHT WITH A DECORATIVE PENDANT LIGHT.



DETAIL
TYPICAL OUTLET MOUNTINGS
NOT TO SCALE

EQUIPMENT:

- TEST – TEST PUSH BUTTON MOUNTED ON THE DISTRIBUTION BOARD ESCUTCHEON.
- RESET – RESET PUSH BUTTON MOUNTED ON THE DISTRIBUTION BOARD ESCUTCHEON.
- LAMP – AMBER TEST INDICATING LAMP MOUNTED ON THE DISTRIBUTION BOARD ESCUTCHEON.
- Ta – ADJUSTABLE 0-3 HOUR TIMED RELAY.
- Tb – 15 MINUTE RUN-ON TIMER TO OPERATE UPON THE RETURN OF MAINS POWER.
- Cx – CONTACTOR x.
- CRx – CONTROL RELAY x.
- Rx – RELAY x.

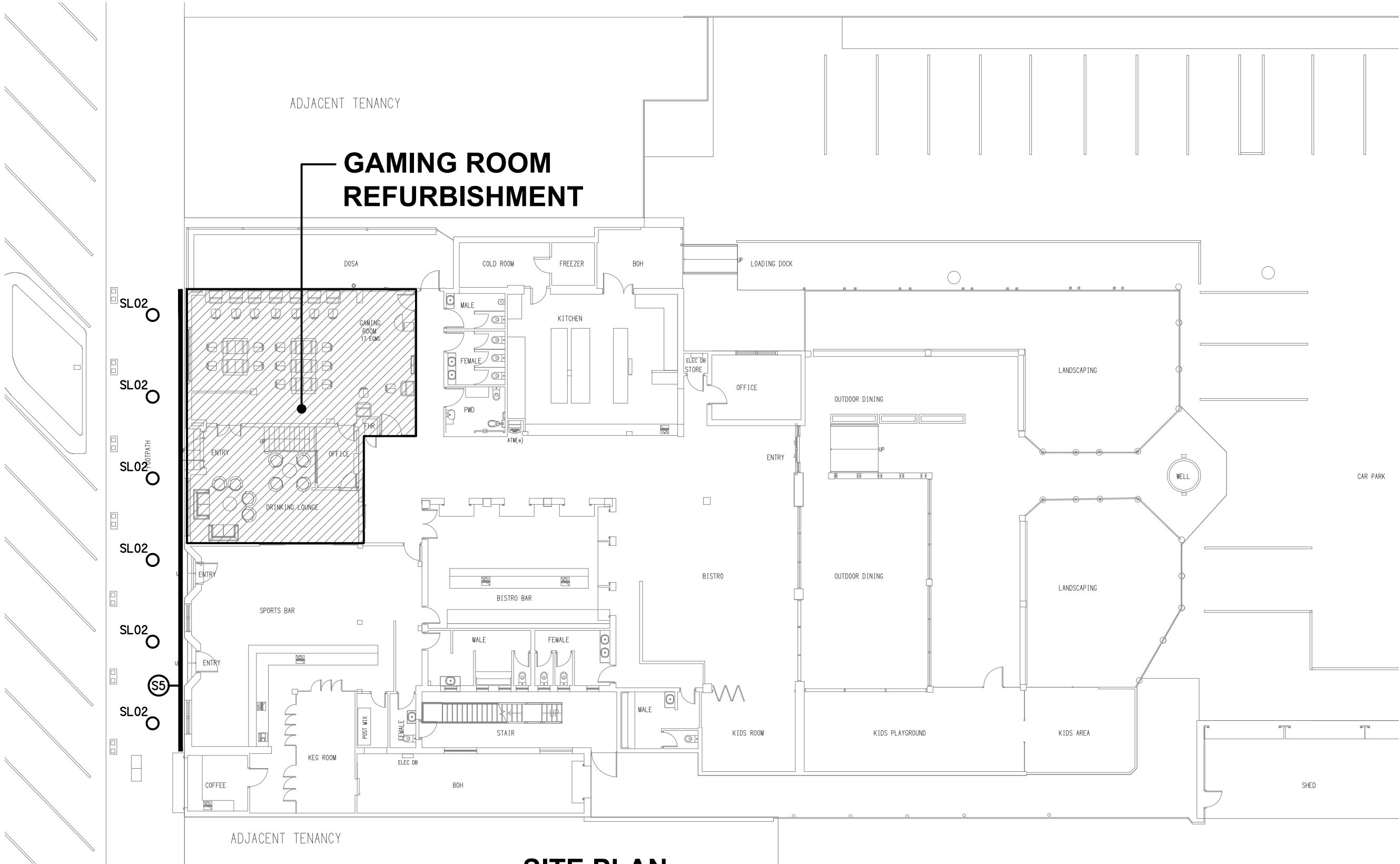


NOTES

1. THE EMERGENCY LIGHT UNSWITCHED ACTIVE / GENERAL LIGHTING SWITCHED ACTIVE CIRCUIT ARRANGEMENT AND CONTROL IS TYPICAL FOR ALL CIRCUITS SUPPLYING EMERGENCY LIGHTS.
2. PROVIDE ADDITIONAL CONTROL RELAYS (CRx) CONFIGURED AS PER CRa AND CRb FOR ALL ADDITIONAL LIGHTING CIRCUITS THAT SUPPLY LIGHTS IN THE VICINITY OF THE EMERGENCY LIGHTS.

SCHEMATIC

EMERGENCY LIGHTING
NOT TO SCALE



SITE PLAN
EXTENT OF WORKS
SCALE 1: 200